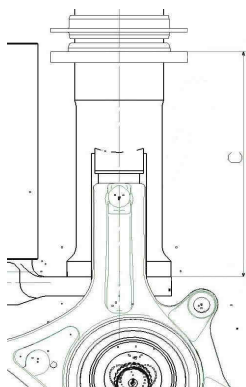
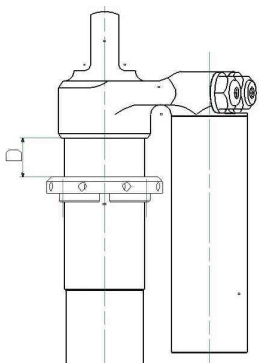


**CITROËN**  
RACING

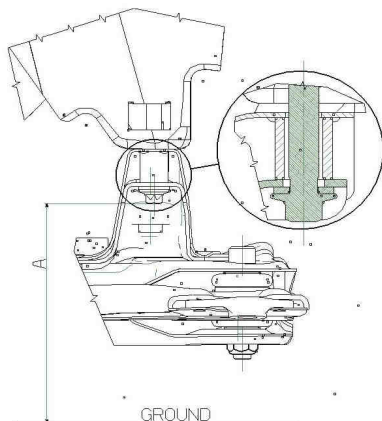
Front spring cup measurement



Rear spring cup measurement

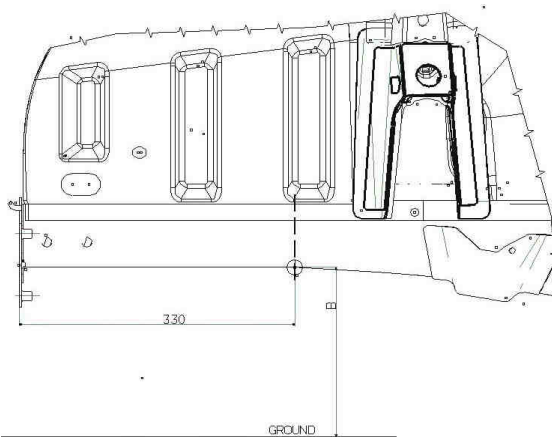


Front ride height measurement



GROUND

Rear ride height measurement



GROUND

# C2R2MAX

## SETUP Sheet

Event	Sweden or Norway Type	Car N°(chassis)	R2 Max	<b>"ICE and SNOW" SET-UP</b>
Date		Surface	Tarmac	
Crew		Weather conditions	Ice and Snow	

### General informations

DIMENSIONS	Rims		6 x 15				Target (*)
	Tyres			Setup pressure	bars	2	Front : 2,4 bars
							Rear : 2,2 bars
	(*) : The target means a tyre pressure just at the end of a 15kms long special stage.						
	Weight balance per wheel (with 20L)	kg	Front L		Front R	Ballast detail	Weight on front %
		kg	Rear L		Rear R		Delta L/R Kg
	Crew weight	kg	Driver		Navigator		Diago delta. Kg
	Total weight	kg			Balast	Kg	
	Total weight without crew	kg					

### Front axle specification

SUSPENSION	Main spring	daN/mm	3,7				
	Intermediate spring	daN/mm	0,4				
	Shock absorber	spec	ABO-RT-070191	Pressure	bars	12	Clicks base (c / C / D) -7 / -12 / -13
	Shock setting		Hydraulic bump stop			-15	Clicks
	Anti roll bar	mm	Without				
GEOMETRY	Anti roll bar link length	mm	Left		285 mm (the second has to be adjusted)		Right
	Wheel spacer	mm	Left		5mm wheel spacer, both sides		Right
	Ride height (A)	mm	Left		235mm, subframe bolt		Right
	Distance between spring cup	mm	Left		1 rev => 1,5 mm ride height		Right
	Toe "in"	mm	Left		0 mm total, toe in on brakes		Right
	Camber	°/"	Left		1"		Right
	Steering joint ball length	mm	Left		1 rev => 4,8 mm at the wheel		Right
	Caster	°/"	Left				Right

### Rear axle specifications

SUSPENSION	Main Spring	daN/mm	3,1				
	Intermediate spring	daN/mm	0,5	S1600 spec			
	Shock absorber	spec	ABO-RT-070144	Pressure	bars	12	Clicks base (c / C / D) -5 / -10 / -13
	Shock setting		Hydraulic bump stop			-1,5 revs	Clicks
	Rear axle crossmember	mm	4/20,5				
GEOMETRY	Wheel spacer	mm	Left		spacer of 5mm in option		Right
	Ride height (B)	mm	Left		410mm on rear body cross member		Right
	Spring cup measurement (D)	mm	Left		1 rev => 2 mm ride height		Right
	Wheel base with crew	mm	Left				Right
	Toe in	mm	Left		4 mm "in" Total		Right
	Toe in shim	°/"	Left		"-" means less toe in		Right
	Camber	°/"	Left		1"		Right
	Camber shim	°/"	Left		"-" means less camber		Right

### Brakes specifications

BRAKES	Caliper (Piston Ø / nb)	mm	Left	42/38	4 pistons	31,8	2 pistons	Rear
	Diameter / Thickness (bd new)	mm	Left	266/22		280 / 8		Rear
	Pads (Mark / model)	spec	Left	FERODO DS3000		FERODO DS3000		Rear
	Master cylinder (Ø)	inch	Principal	22 mm	Without servo		0.700"	HB
	Rear brake pressure limiter	spec		Bendix	Cutting	bars		

### Steering specifications

STE	Steering rack	spec		BCSP4000ZN, CITROEN Racing shop			
	Steering rack height setting	mm	Left				Rear
	Power steering pump	spec		BCSP4007ZX CITROEN Racing shop	Ø Caliber		Following driver

### Gearbox specifications

GEAR	Gears	12 x 36	16 x 34	17 x 28	20 x 27	21 x 24	
	Final ratio (speed in accordance)	13x54 (long, 195km/h)		12x53 (medium, 183km/h)		12x57 (short, 171km/h)	
	Differential	Accel	30	Deccel	90	Preload	9 m.daN quadridisque

**IMPORTANT :** By the "R" rules, the F.I.A limits the low ride height. Please, check the page 1 and 2 of the 28/02 VR2B sheet to know the measurement values, and how / where measuring it.



# C2R2MAX



## Weight balance setup sheet

### Configuration conditions :

20 liters of fuel in the tank.  
1 only spare wheel  
4 wheels equipped with brand new racing tyres P = 2 bars.  
Inboard tool set installed (tools, jack, makita, spare parts)  
Front anti-roll bar disconnected  
Driver (helmet, shoes,...) installed.  
Co-driver (helmet, shoes,...) installed.

### R2 Homologation weight :

1030 kg without crew  
1180 kg with the crew

### Ballast :

### Sump guard :

### Inside :

**FRONT AXLE WEIGHT TARGET : LESS THAN 1 KG**

**Example :** Left front wheel 364 kg / Right front wheel 363,5 kg

Front Left	
Mass	Kg
Ride Height	
Target (A)	mm
Measure (A)	mm
Spring cup measurement	
Measure (C)	mm



Front Right	
Mass	Kg
Ride Height	
Target (A)	mm
Measure (A)	mm
Spring cup measurement	
Measure (C)	mm

Rear Left	
Mass	Kg
Ride Height	
Target (B)	mm
Measure (B)	mm
Spring cup measurement	
Measure (D)	mm

Rear Right	
Mass	Kg
Ride Height	
Target (B)	mm
Measure (B)	mm
Spring cup measurement	
Measure (D)	mm

**REAR AXLE WEIGHT TARGET : LESS THAN 5 KG**

**Example :** Rear left wheel 228 kg / Rear right wheel 224 kg

### Front ride height measurement

### Front spring cup measurement

### Rear ride height measurement

### Rear spring cup measurement

